

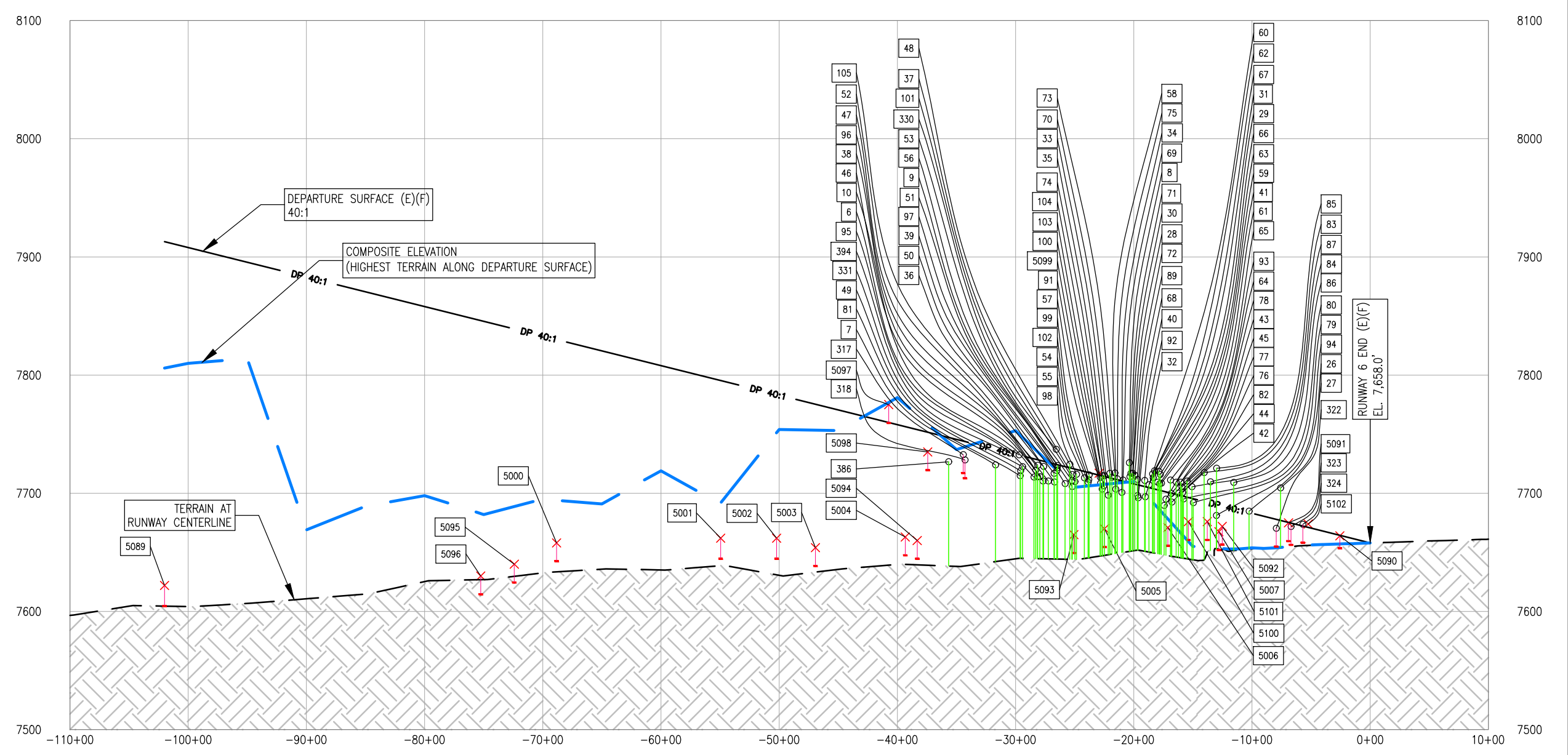
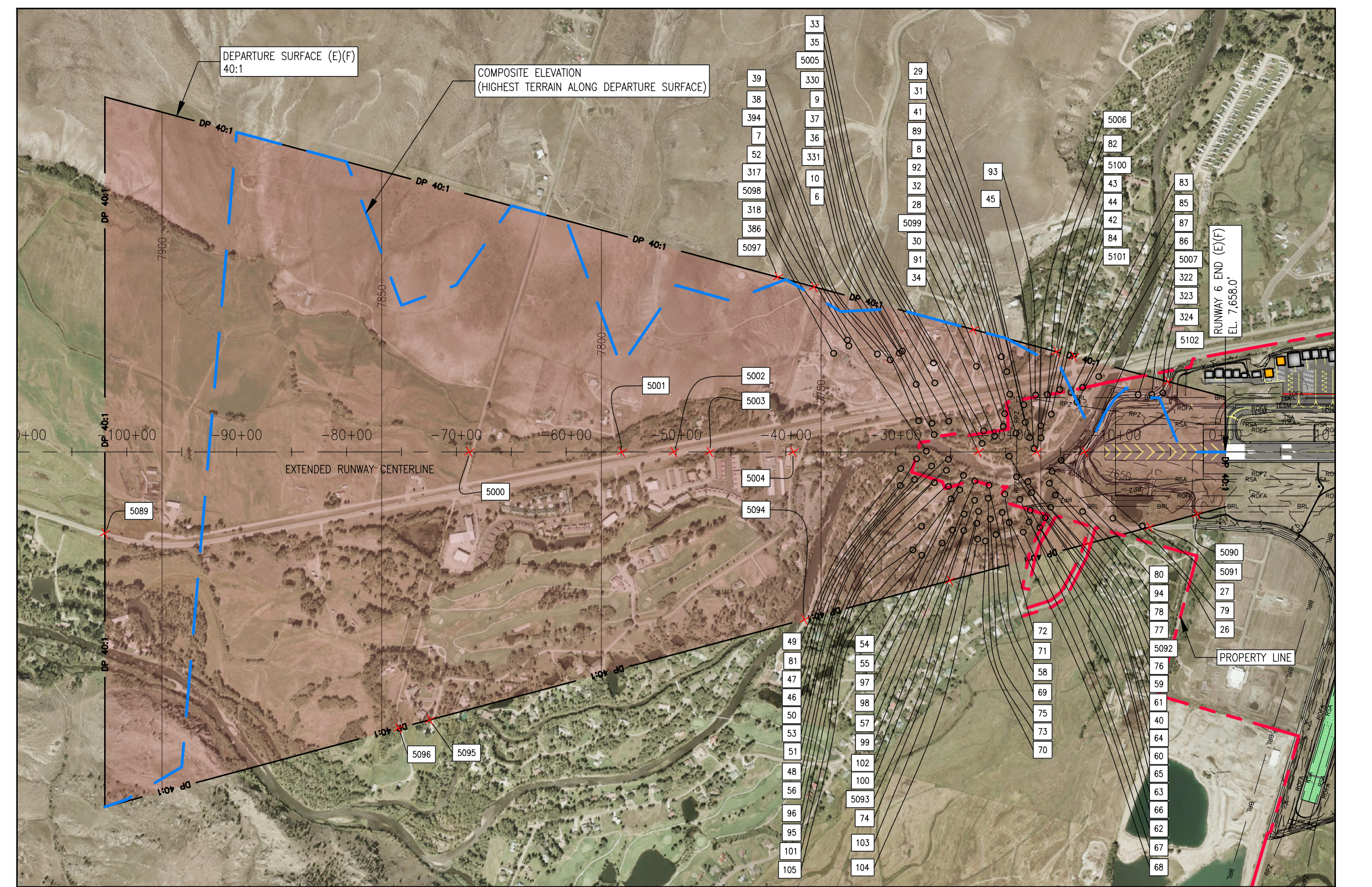
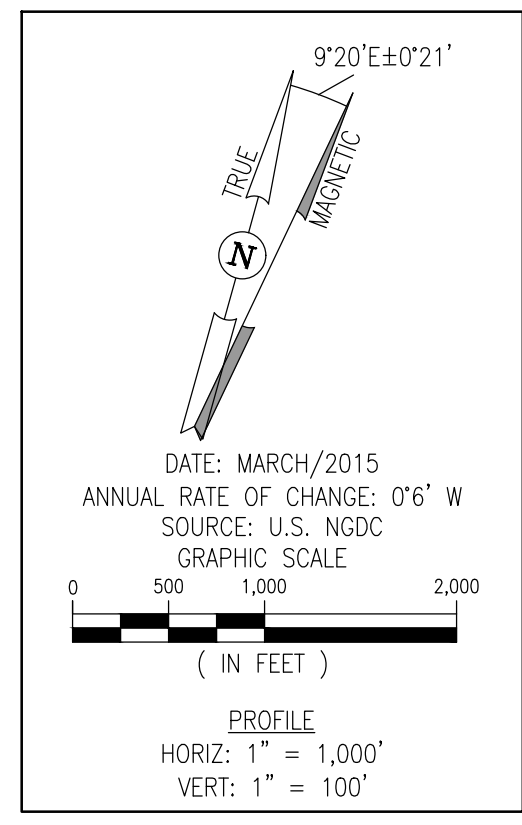
AIRSPACE OBSTACLE TABLE						
NO.	OBJECT TYPE	OBJECT HEIGHT	ABOVE GROUND LEVEL (AGL)	EXISTING DEPARTURE SURFACE ELEVATION	EXISTING DEPARTURE SURFACE PENETRATION	DISPOSITION
6	CHIMNEYSMOCKSTACK	19.89'	7732.49'	7732.24'	0.25'	RUNWAY & DEPARTURE
7	BUILDING	133.26'	7729.23'	7729.23'	-13.26'	RUNWAY & DEPARTURE
8	TELEPHONE PYLONPOLE	28.58'	7725.75'	7726.98'	16.70'	RUNWAY & DEPARTURE
9	TELEPHONE PYLONPOLE	28.67'	7723.43'	7724.14'	-0.71'	RUNWAY & DEPARTURE
10	TELEPHONE PYLONPOLE	20.09'	7713.86'	7728.38'	-14.52'	RUNWAY & DEPARTURE
26	TREE	35.08'	7684.75'	7683.62'	1.13'	RUNWAY & DEPARTURE
27	TREE	53.70'	7704.47'	7676.95'	7.52'	RUNWAY & DEPARTURE
28	TREE	69.67'	7716.72'	7716.72'	0.00'	RUNWAY & DEPARTURE
29	TREE	55.27'	7713.05'	7703.91'	9.14'	RUNWAY & DEPARTURE
30	TREE	69.38'	7716.72'	7706.60'	8.12'	RUNWAY & DEPARTURE
31	TREE	73.27'	7719.01'	7703.62'	15.40'	RUNWAY & DEPARTURE
32	TREE	65.86'	7710.75'	7705.69'	5.06'	RUNWAY & DEPARTURE
33	TREE	72.52'	7716.72'	7713.05'	3.67'	RUNWAY & DEPARTURE
34	TREE	59.19'	7706.95'	7710.54'	-4.36'	RUNWAY & DEPARTURE
35	TREE	55.86'	7698.37'	7713.40'	-15.03'	RUNWAY & DEPARTURE
36	TREE	65.46'	7709.40'	7724.79'	-15.39'	RUNWAY & DEPARTURE
37	TREE	70.36'	7715.84'	7721.03'	-5.19'	RUNWAY & DEPARTURE
38	TREE	69.78'	7714.00'	7727.85'	-13.85'	RUNWAY & DEPARTURE
39	TREE	75.65'	7719.05'	7724.29'	-5.24'	RUNWAY & DEPARTURE
40	TREE	60.74'	7707.96'	7707.24'	0.72'	RUNWAY & DEPARTURE
41	TREE	61.35'	7706.00'	7702.56'	3.45'	RUNWAY & DEPARTURE
42	TREE	52.72'	7706.66'	7697.64'	3.02'	RUNWAY & DEPARTURE
43	TREE	51.16'	7699.75'	7700.07'	-0.32'	RUNWAY & DEPARTURE
44	TREE	44.88'	7692.41'	7699.96'	-7.55'	RUNWAY & DEPARTURE
45	TREE	43.32'	7689.65'	7701.57'	-11.92'	RUNWAY & DEPARTURE
46	TREE	71.42'	7726.74'	7726.74'	0.00'	RUNWAY & DEPARTURE
47	TREE	60.56'	7723.60'	7728.31'	-4.71'	RUNWAY & DEPARTURE
48	TREE	79.58'	7724.51'	7721.53'	2.98'	RUNWAY & DEPARTURE
49	TREE	78.60'	7719.01'	7731.95'	-12.94'	RUNWAY & DEPARTURE
50	TREE	76.20'	7716.72'	7724.88'	-8.16'	RUNWAY & DEPARTURE
51	TREE	79.03'	7721.30'	7724.26'	-2.96'	RUNWAY & DEPARTURE
52	TREE	72.30'	7726.30'	7726.30'	0.00'	RUNWAY & DEPARTURE
53	TREE	66.33'	7710.75'	7721.06'	-10.31'	RUNWAY & DEPARTURE
54	TREE	67.03'	7709.37'	7717.65'	-8.28'	RUNWAY & DEPARTURE
55	TREE	69.15'	7713.04'	7718.47'	-5.43'	RUNWAY & DEPARTURE
56	TREE	62.45'	7705.89'	7721.05'	-15.36'	RUNWAY & DEPARTURE
57	TREE	65.97'	7708.44'	7715.03'	-6.59'	RUNWAY & DEPARTURE
58	TREE	68.92'	7703.40'	7713.62'	-10.22'	RUNWAY & DEPARTURE
59	TREE	84.21'	7709.36'	7702.96'	6.42'	RUNWAY & DEPARTURE
60	TREE	53.98'	7698.98'	7705.57'	-8.59'	RUNWAY & DEPARTURE
61	TREE	62.45'	7708.44'	7702.15'	6.29'	RUNWAY & DEPARTURE
62	TREE	64.21'	7707.07'	7704.79'	2.28'	RUNWAY & DEPARTURE
63	TREE	79.21'	7715.78'	7702.42'	13.30'	RUNWAY & DEPARTURE
64	TREE	65.97'	7709.36'	7699.36'	10.31'	RUNWAY & DEPARTURE
65	TREE	65.62'	7711.20'	7700.38'	10.84'	RUNWAY & DEPARTURE
66	TREE	72.68'	7718.54'	7702.69'	15.85'	RUNWAY & DEPARTURE
67	TREE	73.38'	7718.24'	7704.02'	12.22'	RUNWAY & DEPARTURE
68	TREE	68.44'	7711.66'	7707.24'	4.42'	RUNWAY & DEPARTURE
69	TREE	89.15'	7711.20'	7710.27'	0.93'	RUNWAY & DEPARTURE
70	TREE	70.57'	7713.51'	7712.62'	0.89'	RUNWAY & DEPARTURE
71	TREE	70.56'	7713.96'	7708.84'	5.12'	RUNWAY & DEPARTURE
72	TREE	66.68'	7712.59'	7708.24'	4.35'	RUNWAY & DEPARTURE
73	TREE	72.32'	7717.17'	7712.00'	5.17'	RUNWAY & DEPARTURE
74	TREE	70.91'	7714.22'	7714.22'	0.00'	RUNWAY & DEPARTURE
75	TREE	89.15'	7712.13'	7711.51'	0.62'	RUNWAY & DEPARTURE
76	TREE	59.27'	7705.25'	7697.92'	7.33'	RUNWAY & DEPARTURE
77	TREE	83.15'	7710.29'	7698.14'	13.55'	RUNWAY & DEPARTURE
78	TREE	63.86'	7709.38'	7698.10'	11.28'	RUNWAY & DEPARTURE
79	TREE	49.39'	7691.95'	7695.41'	-3.46'	RUNWAY & DEPARTURE
80	TREE	45.86'	7695.18'	7697.48'	-2.32'	RUNWAY & DEPARTURE
81	TREE	74.79'	7714.78'	7732.03'	-17.25'	RUNWAY & DEPARTURE
82	TREE	51.16'	7699.97'	7699.96'	0.01'	RUNWAY & DEPARTURE
83	TREE	65.33'	7717.40'	7693.14'	24.26'	RUNWAY & DEPARTURE
84	TREE	55.74'	7705.48'	7695.73'	9.75'	RUNWAY & DEPARTURE
85	TREE	69.85'	7721.07'	7690.50'	30.57'	RUNWAY & DEPARTURE
86	TREE	51.51'	7709.15'	7686.87'	22.28'	RUNWAY & DEPARTURE
87	TREE	58.92'	7709.60'	7691.79'	17.81'	RUNWAY & DEPARTURE
89	TREE	67.74'	7715.28'	7707.77'	7.51'	RUNWAY & DEPARTURE
91	TREE	26.81'	7714.89'	7714.89'	-11.22'	RUNWAY & DEPARTURE
92	TREE	49.86'	7696.12'	7707.09'	-10.97'	RUNWAY & DEPARTURE
93	TREE	45.86'	7695.00'	7701.22'	-6.22'	RUNWAY & DEPARTURE
94	TREE	35.28'	7681.17'	7690.53'	-9.36'	RUNWAY & DEPARTURE
95	TREE	75.03'	7713.70'	7726.12'	-15.42'	RUNWAY & DEPARTURE
96	TREE	89.85'	7719.32'	7727.19'	-18.87'	RUNWAY & DEPARTURE
97	TREE	68.21'	7708.07'	7722.52'	-14.45'	RUNWAY & DEPARTURE
98	TREE	74.79'	7715.95'	7720.11'	-4.16'	RUNWAY & DEPARTURE
99	TREE	71.97'	7715.39'	7717.45'	-2.06'	RUNWAY & DEPARTURE
100	TREE	69.15'	7713.70'	7715.11'	-1.41'	RUNWAY & DEPARTURE
101	TREE	68.91'	7709.76'	7720.45'	-10.69'	RUNWAY & DEPARTURE
102	TREE	88.44'	7717.55'	7717.55'	0.00'	RUNWAY & DEPARTURE
103	TREE	73.38'	7714.38'	7714.60'	-0.22'	RUNWAY & DEPARTURE
104	TREE	66.56'	7706.38'	7714.38'	-8.00'	RUNWAY & DEPARTURE
105	TREE	83.73'	7722.70'	7727.09'	-4.39'	RUNWAY & DEPARTURE
317	PRIMARY ROAD	15.00'	7732.68'	7744.06'	-11.38'	RUNWAY & DEPARTURE
318	PRIMARY ROAD	15.00'	7728.18'	7743.11'	-15.53'	RUNWAY & DEPARTURE
322	PRIMARY ROAD	15.00'	7691.24'	7677.89'	13.35'	RUNWAY & DEPARTURE
323	PRIMARY ROAD	15.00'	7671.85'	7674.79'	-2.92'	RUNWAY & DEPARTURE
324	PRIMARY ROAD	15.00'	7673.58'	7672.28'	1.32'	RUNWAY & DEPARTURE
330	BUILDING	33.81'	7737.15'	7724.41'	12.74'	RUNWAY & DEPARTURE
331	BUILDING	9.59'	7722.47'	7731.54'	-9.07'	RUNWAY & DEPARTURE
388	POLE	31.85'	7726.59'	7747.18'	-20.59'	RUNWAY & DEPARTURE
384	POLE	23.48'	7734.00'	7734.29'	-0.29'	RUNWAY & DEPARTURE

NOTES

- SERVICE ROADS PROVIDE ACCESS TO THE AIRPORT'S NAVIGATIONAL AIDS. ACCESS TO THESE ROADS IS CONTROLLED.
- EXISTING AND FUTURE CONDITIONS ARE SHOWN AS (E)(F).

SOURCE

- THIS SITE PLAN LINE WORK AND AERIAL IMAGE IS BASED ON THE PLANIMETRIC MAPPING & ORTHO-IMAGERY INFORMATION COMPILED BY WOOLPERT, INC. IN 2014.
- OBSTRUCTION SURVEY DATA WAS COMPILED BY WOOLPERT, INC. IN 2014.
- ALL HORIZONTAL COORDINATES - NAD83/2011, ALL VERTICAL COORDINATES - NAVD88



DEPARTURE ROAD INTERSECTION TABLE						
NO.	OBJECT TYPE	OBJECT HEIGHT	ABOVE GROUND LEVEL (AGL)	EXISTING DEPARTURE SURFACE ELEVATION	EXISTING DEPARTURE SURFACE PENETRATION	DISPOSITION
5000	PUBLIC ROAD (+15' ADJUSTMENT ADDED)	15.00'	7658.00'	7830.07'	-172.07'	RUNWAY & DEPARTURE
5001	PUBLIC ROAD (+15' ADJUSTMENT ADDED)	15.00'	7660.00'	7795.38'	-135.38'	RUNWAY & DEPARTURE
5002	PUBLIC ROAD (+15' ADJUSTMENT ADDED)	15.00'	7660.00'	7783.53'	-123.53'	RUNWAY & DEPARTURE
5003	PUBLIC ROAD (+15' ADJUSTMENT ADDED)	15.00'	7654.00'	7775.33'	-121.33'	RUNWAY & DEPARTURE
5004	PUBLIC ROAD (+15' ADJUSTMENT ADDED)	15.00'	7663.00'	7756.32'	-93.32'	RUNWAY & DEPARTURE
5005	PUBLIC ROAD (+15' ADJUSTMENT ADDED)	15.00'	7670.00'	7714.19'	-44.19'	RUNWAY & DEPARTURE
5006	PUBLIC ROAD (+15' ADJUSTMENT ADDED)	15.00'	7671.00'	7700.78'	-29.78'	RUNWAY & DEPARTURE
5007	PUBLIC ROAD (+15' ADJUSTMENT ADDED)	15.00'	7687.50'	7689.98'	-22.48'	RUNWAY & DEPARTURE
5089	PUBLIC ROAD (+15' ADJUSTMENT ADDED)	15.00'	7620.00'	7913.00'	-293.00'	RUNWAY & DEPARTURE
5090	PRIVATE ROAD (+10' ADJUSTMENT ADDED)	15.00'	7684.00'	7684.00'	0.00'	RUNWAY & DEPARTURE
5091	PUBLIC ROAD (+15' ADJUSTMENT ADDED)	15.00'	7675.00'	7675.27'	-0.27'	RUNWAY & DEPARTURE
5092	PUBLIC ROAD (+15' ADJUSTMENT ADDED)	15.00'	7672.00'	7688.28'	-11.28'	RUNWAY & DEPARTURE
5093	PUBLIC ROAD (+15' ADJUSTMENT ADDED)	15.00'	7665.00'	7720.69'	-55.69'	RUNWAY & DEPARTURE
5094	PUBLIC ROAD (+15' ADJUSTMENT ADDED)	15.00'	7660.00'	7753.80'	-93.80'	RUNWAY & DEPARTURE
5095	PUBLIC ROAD (+15' ADJUSTMENT ADDED)	15.00'	7640.00'	7839.01'	-199.01'	RUNWAY & DEPARTURE
5096	PUBLIC ROAD (+15' ADJUSTMENT ADDED)	15.00'	7638.00'	7838.12'	-218.12'	RUNWAY & DEPARTURE
5097	PUBLIC ROAD (+15' ADJUSTMENT ADDED)	15.00'	7775.00'	7759.84'	15.16'	RUNWAY & DEPARTURE
5098	PUBLIC ROAD (+15' ADJUSTMENT ADDED)	15.00'	7735.00'	7751.59'	-16.59'	RUNWAY & DEPARTURE
5099	PUBLIC ROAD (+15' ADJUSTMENT ADDED)	15.00'	7717.00'	7715.31'	1.69'	RUNWAY & DEPARTURE
5100	PUBLIC ROAD (+15' ADJUSTMENT ADDED)	15.00'	7676.00'	7698.48'	-20.48'	RUNWAY & DEPARTURE
5101	PUBLIC ROAD (+15' ADJUSTMENT ADDED)	15.00'	7679.00'	7692.49'	-16.49'	RUNWAY & DEPARTURE
5102	PUBLIC ROAD (+15' ADJUSTMENT ADDED)	15.00'	7674.00'	7691.69'	-2.69'	RUNWAY & DEPARTURE

*FINAL DETERMINATION PENDING FAA AERONAUTICAL STUDY

JVIATION

DES: R.L.B.
DR: R.L.B.
CH: S.V.B.
APP: S.V.B.

ISSUE RECORD				
NO.	BY	DATE	DESCRIPTION	
1	S.V.B.	11/17/16	FINAL	

THE PREPARATION OF THIS DOCUMENT MAY HAVE BEEN SUPPORTED, IN PART, THROUGH THE AIRPORT IMPROVEMENT PROGRAM FINANCIAL ASSISTANCE FROM THE FEDERAL AVIATION ADMINISTRATION AS PROVIDED UNDER TITLE 49 U.S.C. SECTION 47104. THE CONTENTS DO NOT NECESSARILY REFLECT THE OFFICIAL VIEWS OR POLICY OF THE FAA. ACCEPTANCE OF THIS AIRPORT LAYOUT PLAN BY THE FAA DOES NOT IN ANY WAY CONSTITUTE A COMMITMENT ON THE PART OF THE UNITED STATES TO PARTICIPATE IN ANY DEVELOPMENT DEPICTED THEREIN NOR DOES IT INDICATE THAT THE PROPOSED DEVELOPMENT IS ENVIRONMENTALLY ACCEPTABLE OR WOULD HAVE JUSTIFICATION IN ACCORDANCE WITH APPROPRIATE PUBLIC LAWS.

AIRPORT LAYOUT PLAN

RUNWAY DEPARTURE SURFACE DRAWING - RUNWAY 6		SHEET NO. 16 of 19
AIP PROJ. NO. 3-08-0030-048	JVIATION PROJ. NO. 2014.GUC.03	DATE: NOVEMBER, 2016